



Topic: Evidence of Evolution Worksheet

Summary: Students are introduced to evidence of evolution vocabulary terms, and they use those terms to answer questions.

NGSS Standards:

HS-LS4-1. Communicate scientific information that common ancestry and biological evolution are supported by multiple lines of empirical evidence.

Time Length: 15 minutes

Materials:

Class notes or textbook or online textbook

- <https://flexbooks.ck12.org/cbook/ck-12-biology-flexbook-2.0/section/5.15/primary/lesson/fossils-bio/>
- <https://flexbooks.ck12.org/cbook/ck-12-biology-flexbook-2.0/section/5.16/primary/lesson/living-species-bio/>
- <https://flexbooks.ck12.org/cbook/ck-12-biology-flexbook-2.0/section/5.1/primary/lesson/history-of-life-bio/>
- <https://flexbooks.ck12.org/cbook/ck-12-biology-flexbook-2.0/section/5.25/primary/lesson/animal-evolution-bio/>

Procedures:

1. Tell the students which section they are to use in the textbook. Students are then going to read the section and answer the questions on the worksheet.

Accommodations:

Students with a modification IEP can have two free answers per section, reducing the number of options. Students with an IEP can take the handout home if they need extra time.

Editable DOCX File and Answer Key:

Available at www.ngsslifescience.com

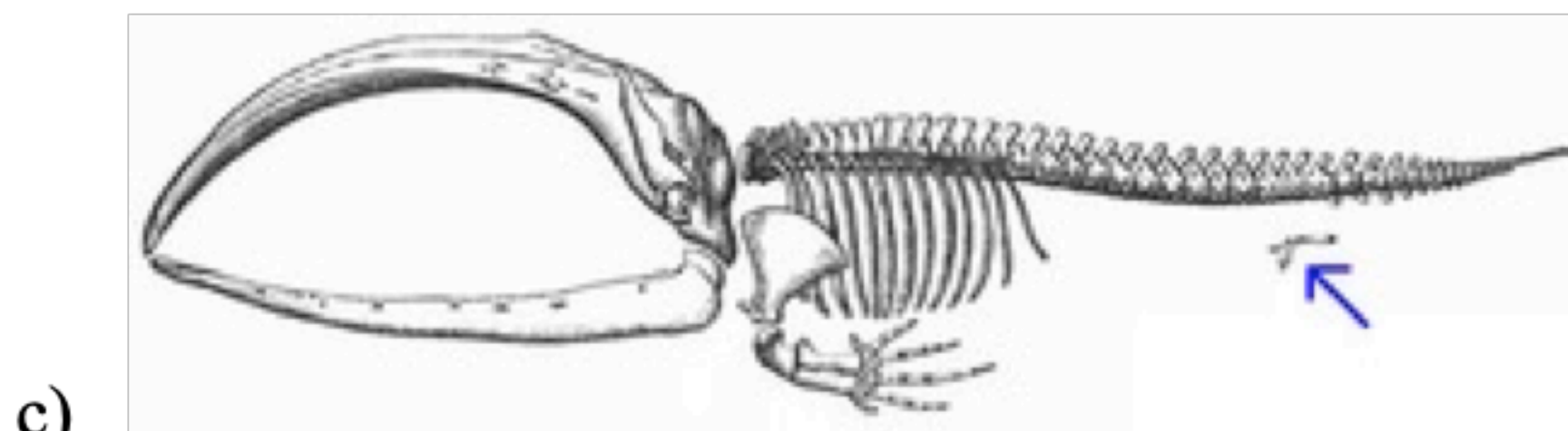
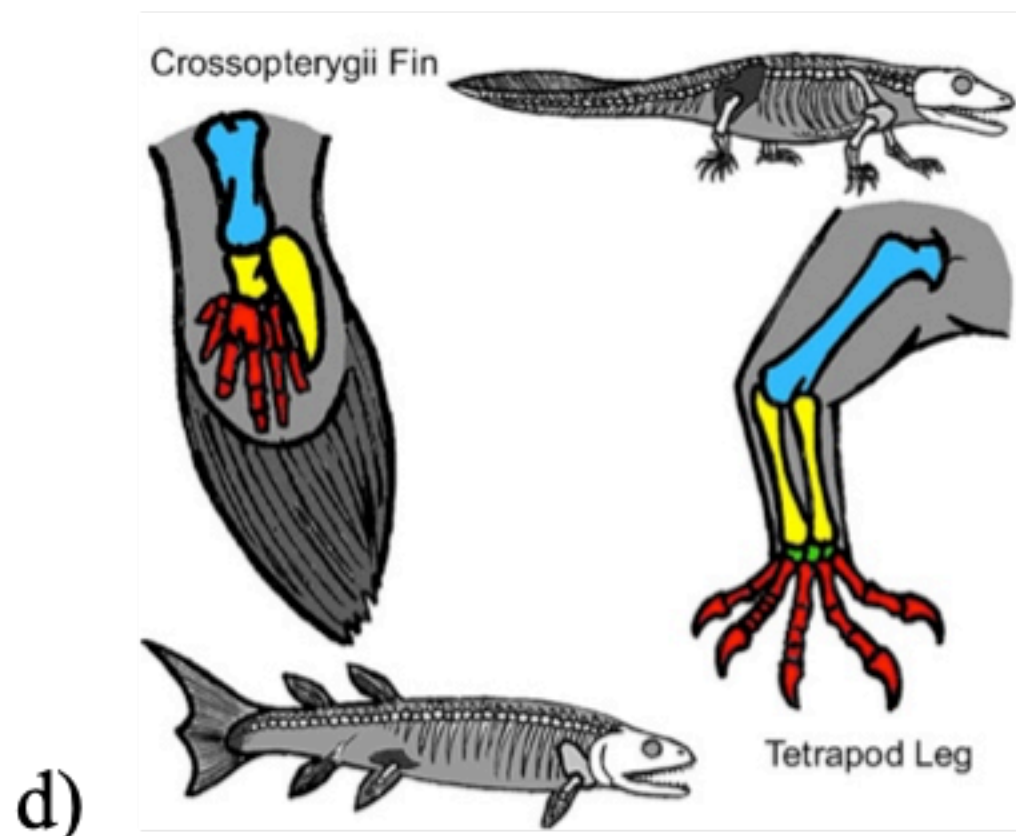
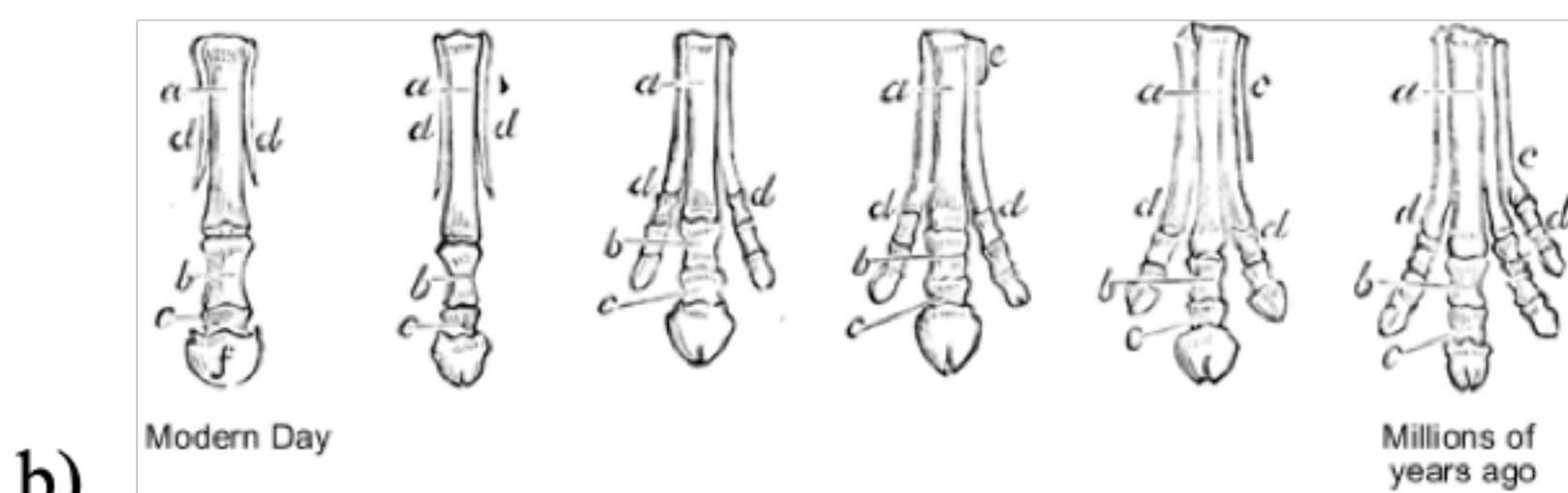
Evidence of Evolution Worksheet

Write the letter of the correct definition in the blank space on the left.

- | | |
|--------------------------------|--------------------------------------------------------------------------------------------|
| 1. _____ vestigial structure | a) remains of dead organisms |
| 2. _____ homologous structures | b) similarities and differences in nucleotide sequences between organisms. |
| 3. _____ DNA sequence | c) related organisms have the same bone makeup. |
| 4. _____ fossil record | d) in the early stages of development dogs, pigs, and humans resemble one another. |
| 5. _____ embryology | e) structures that have reduced in size because they no longer serve an important function |

Write the letter of the correct diagram model to match the keyword on the left.

- | |
|--------------------------------|
| 6. _____ vestigial structure |
| 7. _____ homologous structures |
| 8. _____ transitional fossil |
| 9. _____ embryology |



Fill in the blank using the vocabulary terms in the box.

vestigial structure DNA sequence	radiometric dating plate tectonics	transitional fossil amino acid sequence
-------------------------------------	---------------------------------------	--------------------------------------------

The strongest evidence for evolution is the (10) _____ and that code can be used to build a(n) (11) _____. When a species has a body part that is no longer useful, like the tail bone in human, that is called a(n) (12) _____. Scientists can approximate the age of something old by (13) _____. By inspecting the fossils of organisms, scientists predict they will find a(n) (14) _____. Organisms across the Earth used to live on one super continent but became separated by (15) _____.